



Green Leaf Lab

12025 NE Marx St. Portland, OR 97220
503-253-3511 / www.greenleaflabs.com
License#: 10029074C70

Regulatory Compliance Testing (OAR-333-007) Official Report

Blue Meringue

Sample ID: Matrix: Industrial Hemp
Test ID: 5023461
Source ID:
Date Sampled: 10/30/23 Date Accepted: 10/30/23

Farm 15

Results at a Glance

Total THC :	0.65 %
Total CBD :	17 %
Total CBG :	0.029 %
Pesticides :	PASS
Water Activity :	0.62 PASS
Percent Moisture :	12.3 % PASS
Total Terpenes :	2.528 % PASS
Microbials :	PASS
Metals :	PASS
Mycotoxins :	PASS



Eric Wendt
Chief Science Officer - 11/2/2023

These results relate only to the sample included on this report. The report may not be reproduced except in full, without the written permission of Green Leaf Lab.



Blue Meringue

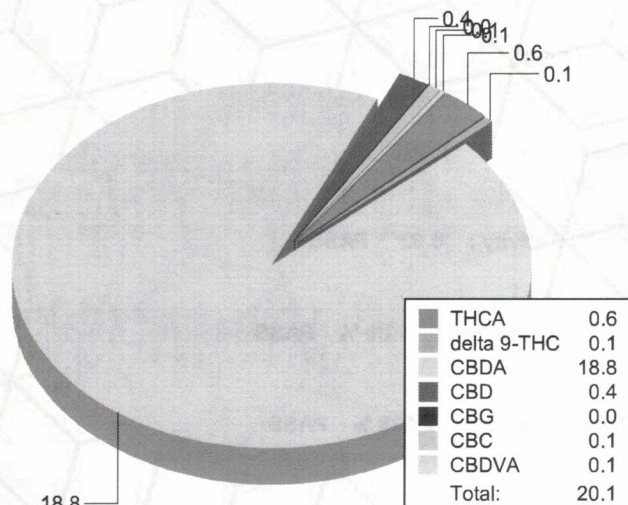
Sample ID: Matrix: Industrial Hemp
Test ID: 5023461
Source ID:
Date Sampled: 10/30/23 Date Accepted: 10/30/23

Farm 15

Potency Analysis

Date/Time Extracted: 10/31/23 10:05 Analysis Method/SOP: 215 Batch Identification: 2344008

	LOQ (%)	% by Wt.	mg/g	Cannabinoids Profile
Total THC	0.010	0.65	6.5	
Total CBD	0.009	17	170	
Total CBG	0.0009	0.029	0.29	
THCA	0.0006	0.64	6.4	
delta 9-THC	0.0006	0.083	0.83	
delta 8-THC	0.005	< LOQ	< LOQ	
THCV	0.006	< LOQ	< LOQ	
THCVA	0.002	< LOQ	< LOQ	
CBD	0.002	0.37	3.7	
CBDA	0.002	19	190	
CBDV	0.006	< LOQ	< LOQ	
CBDVA	0.002	0.061	0.61	
CBN	0.003	< LOQ	< LOQ	
CBG	0.0009	0.029	0.29	
CBGA	0.0009	< LOQ	< LOQ	
CBC	0.010	0.14	1.4	



Water Activity

Date/Time Extracted: 10/31/23 14:46 Analysis Method/SOP: 102

Water Activity: 0.62 at 24°C Action Level: 0.65

Moisture

Date/Time Extracted: 10/31/23 14:39 Analysis Method/SOP: 103

Moisture: 12.3 % Action Level: 15%

Potency results are reported on a dry weight basis.

Total THC = delta 9-THC + (THCA * 0.877)

Total CBD = CBD + (CBDA * 0.877)

Total CBG = CBG + (CBGA * 0.878)

LOQ=Limit of Quantification, the lowest measurable concentration of an analyte.

THCA, delta 9-THC, delta 8-THC, CBDA and CBD are accredited by TNI 2016 and ISO 17025



Eric Wendt
Chief Science Officer - 11/2/2023

These results relate only to the sample included on this report. The report may not be reproduced except in full, without the written permission of Green Leaf Lab.