

# Green Leaf Lab

12025 NE Marx St. Portland, OR 97220  
503-253-3511 / www.greenleaflabs.com  
License#: 10029074C70

## Quality Control Testing Official Report

### Bubba Kush 59

Sample ID: G3J0408-01  
Test ID: 5023455  
Source ID:

Matrix: Industrial Hemp

Date Sampled: 10/30/23

Date Accepted: 10/30/23

**Elli-Hou Farms LLC**  
sales@ellihoufarms.com

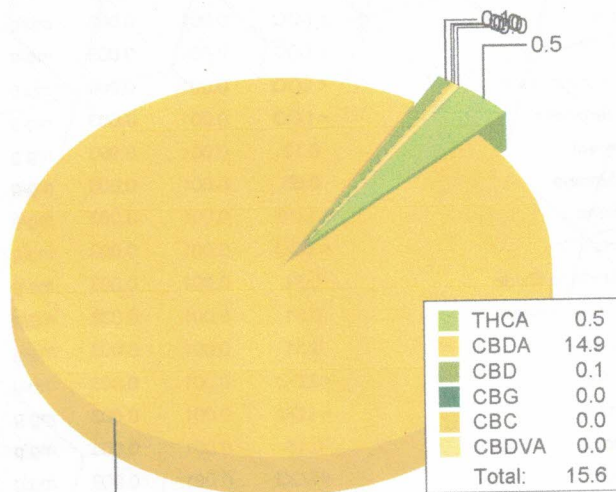
### Potency Analysis

Date/Time Extracted: 10/31/23 10:05

Analysis Method/SOP: 215

Batch Identification: 2344008

	LOQ (%)	% by Wt.	mg/g	Cannabinoids Profile
Total THC	0.010	0.45	4.5	
Total CBD	0.009	13	130	
Total CBG	0.0009	0.003	0.03	
THCA	0.0006	0.51	5.1	
delta 9-THC	0.0006	< LOQ	< LOQ	
delta 8-THC	0.005	< LOQ	< LOQ	
THCV	0.006	< LOQ	< LOQ	
THCVA	0.002	< LOQ	< LOQ	
CBD	0.002	0.12	1.2	
CBDA	0.002	15	150	
CBDV	0.006	< LOQ	< LOQ	
CBDVA	0.002	0.031	0.31	
CBN	0.003	< LOQ	< LOQ	
CBG	0.0009	0.003	0.03	
CBGA	0.0009	< LOQ	< LOQ	
CBC	0.010	0.048	0.48	



### Moisture

Date/Time Extracted: 10/31/23 14:39

Analysis Method/SOP: 103

Moisture: 9.43 %

Action Level: 15%

Potency results are reported on a dry weight basis.

Total THC = delta 9-THC + (THCA \* 0.877)

Total CBD = CBD + (CBDA \* 0.877)

Total CBG = CBG + (CBGA \* 0.878)

LOQ=Limit of Quantification, the lowest measurable concentration of an analyte.

THCA, delta 9-THC, delta 8-THC, CBDA and CBD are accredited by TNI 2016 and ISO 17025

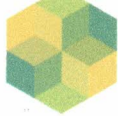


ISO 17025  
ACCREDITED

Eric Wendt  
Chief Science Officer - 11/2/2023

These results relate only to the sample included on this report. The report may not be reproduced except in full, without the written permission of Green Leaf Lab.

This is for informational testing and is not compliance testing. Lab results apply to the sample as received.



### Bubba Kush 59

Sample ID: G3J0408-01

Matrix: Industrial Hemp

Test ID: 5023455

Source ID:

Date Sampled: 10/30/23

Date Accepted: 10/30/23

**Elli-Hou Farms LLC**  
sales@ellihoufarms.com

### Terpene Analysis by GCMS

Date/Time Extracted: 10/31/23 10:05

Analysis Method/SOP: 204

Date/Time Analyzed: 11/01/23 01:43

Analyte	Result	LOD	LOQ	Units	Analyte	Result	LOD	LOQ	Units
(-)-Borneol	< LOQ	0.001	0.003	mg/g	(+)-Borneol	< LOQ	0.001	0.003	mg/g
3-Carene	< LOQ	0.001	0.003	mg/g	alpha-Bisabolol	0.27	0.001	0.003	mg/g
alpha-Cedrene	< LOQ	0.001	0.003	mg/g	alpha-Humulene	1.25	0.001	0.003	mg/g
Alpha-Phellandrene	< LOQ	0.001	0.003	mg/g	alpha-Pinene	0.12	0.001	0.003	mg/g
alpha-Terpinene	< LOQ	0.001	0.003	mg/g	alpha-Thujone	< LOQ	0.001	0.003	mg/g
A-Terpineol	0.12	0.001	0.003	mg/g	beta-Caryophyllene	3.62	0.001	0.003	mg/g
beta-Myrcene	0.65	0.001	0.003	mg/g	beta-Pinene	0.22	0.001	0.003	mg/g
Camphene	< LOQ	0.001	0.003	mg/g	Camphor	< LOQ	0.001	0.003	mg/g
Carvacrol	< LOQ	0.001	0.003	mg/g	Carvone	< LOQ	0.001	0.003	mg/g
Caryophyllene Oxide	0.31	0.001	0.003	mg/g	Cedrol	< LOQ	0.001	0.003	mg/g
Cis-beta-Farnesene	0.51	0.001	0.003	mg/g	Cis-beta-Ocimene	< LOQ	0.001	0.003	mg/g
cis-Nerolidol	0.31	0.001	0.003	mg/g	Citral	< LOQ	0.001	0.003	mg/g
Citronellol	< LOQ	0.001	0.003	mg/g	Endo-fenchyl alcohol	0.15	0.001	0.003	mg/g
Eucalyptol	< LOQ	0.001	0.003	mg/g	Farnesol 1	< LOQ	0.001	0.003	mg/g
Farnesol 2	0.15	0.001	0.003	mg/g	gamma-Terpinene	< LOQ	0.001	0.003	mg/g
Geraniol	< LOQ	0.001	0.003	mg/g	Geranyl acetate	< LOQ	0.001	0.003	mg/g
Guaiol	< LOQ	0.001	0.003	mg/g	Isoborneol	< LOQ	0.001	0.003	mg/g
Isobornyl Acetate	< LOQ	0.001	0.003	mg/g	Isopulegol	< LOQ	0.001	0.003	mg/g
Limonene	1.4	0.001	0.003	mg/g	Linalool	0.47	0.001	0.003	mg/g
Menthol	< LOQ	0.001	0.003	mg/g	Menthone	< LOQ	0.001	0.003	mg/g
Nootkatone	< LOQ	0.001	0.003	mg/g	Octyl Acetate	< LOQ	0.001	0.003	mg/g
p-Cymene	< LOQ	0.001	0.003	mg/g	Phytane	< LOQ	0.001	0.003	mg/g
Piperitone	< LOQ	0.001	0.003	mg/g	Pulegone	< LOQ	0.001	0.003	mg/g
Sabinene	< LOQ	0.001	0.003	mg/g	Sabinene hydrate	< LOQ	0.001	0.003	mg/g
Safranal	< LOQ	0.001	0.003	mg/g	Squalene	< LOQ	0.001	0.003	mg/g
Terpinen-4-ol	0.07	0.001	0.003	mg/g	Terpinolene	< LOQ	0.001	0.003	mg/g
Thymol	< LOQ	0.001	0.003	mg/g	trans-beta-Farnesene	0.5	0.001	0.003	mg/g
trans-beta-Ocimene	< LOQ	0.001	0.003	mg/g	trans-Nerolidol	0.28	0.001	0.003	mg/g
Valencene	0.31	0.001	0.003	mg/g	Verbenone	< LOQ	0.001	0.003	mg/g
<b>Total Terpenes</b>	<b>10.64</b>	<b>0.001</b>	<b>0.003</b>	<b>mg/g</b>					

ND - Compound not detected, <LOQ - Results below the Limit of Quantitation  
Terpenes are not Accredited by ORELAP to TNI 2016 and ISO 17025



Eric Wendt  
Chief Science Officer - 11/2/2023

These results relate only to the sample included on this report. The report may not be reproduced except in full, without the written permission of Green Leaf Lab.

This is for informational testing and is not compliance testing. Lab results apply to the sample as received.