

D10.032723

 Sample ID: SA-230329-19436
 Batch: 032723
 Type: In-Process Materials
 Matrix: Concentrate - Distillate
 Unit Mass (g):

 Received: 03/29/2023
 Completed: 04/12/2023

Client
 MC Nutraceuticals
 6101 Long Prairie Rd, Ste 144 LB 17
 Flower Mound, TX 75028
 USA

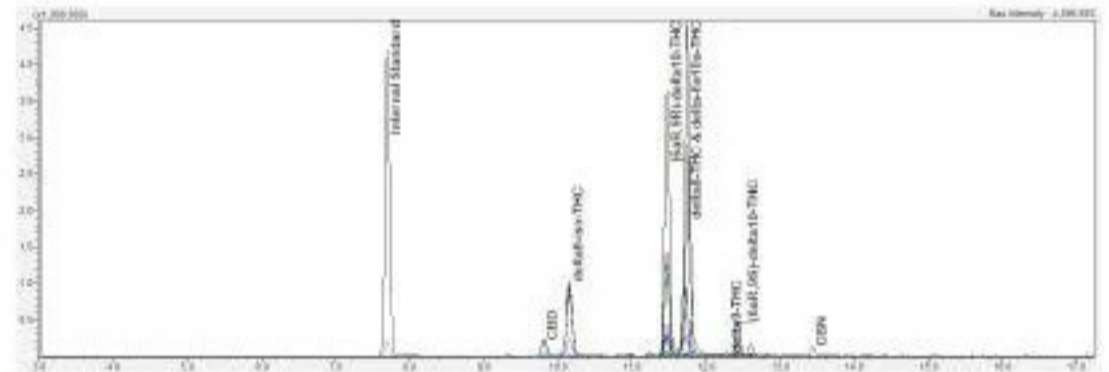
Summary

Test	Date Tested	Status
Cannabinoids	04/12/2023	Tested

0.187 %	42.5 %	94.7 %	Not Tested	Not Tested	Yes
Total Δ9-THC	Δ6a,10a-THC	Total Cannabinoids	Moisture Content	Foreign Matter	Internal Standard Normalization

Cannabinoids by HPLC-PDA, LC-MS/MS, and/or GC-MS/MS

Analyte	LOD (%)	LOQ (%)	Result (%)	Result (mg/g)
CBC	0.0095	0.0284	ND	ND
CBCV	0.006	0.018	ND	ND
CBD	0.0081	0.0242	2.11	21.1
CBDV	0.0061	0.0182	ND	ND
CBG	0.0057	0.0172	ND	ND
CBL	0.0112	0.0335	ND	ND
CBN	0.0056	0.0169	0.371	3.71
CBT	0.018	0.054	ND	ND
Δ6a,10a-THC	0.0067	0.02	42.5	425
Δ8-THC	0.0104	0.0312	6.81	68.1
Δ9-THC	0.0076	0.0227	0.187	1.87
Δ9-THCV	0.0069	0.0206	ND	ND
[6aR,9R]-Δ10-THC	0.0067	0.02	33.2	332
[6aR,9S]-Δ10-THC	0.0067	0.02	4.52	45.2
Δ8-iso-THC	0.0067	0.02	5.01	50.1
Δ4,8-iso-THC	0.0067	0.02	ND	ND
Total Δ9-THC			0.187	1.87
Total CBD			2.11	21.1
Total			94.7	947



ND = Not Detected; NT = Not Tested; LOD = Limit of Detection; LOQ = Limit of Quantitation; RL = Reporting Limit; Δ = Delta; Total Δ9-THC = Δ9-THCA * 0.877 + Δ9-THC; Total CBD = CBDA * 0.877 + CBD;



 Generated By: Ryan Bellone
 CCO
 Date: 04/12/2023



 Tested By: Scott Caudill
 Senior Scientist
 Date: 04/12/2023

 ISO/IEC 17025:2017 Accredited
 Accreditation #108651
